

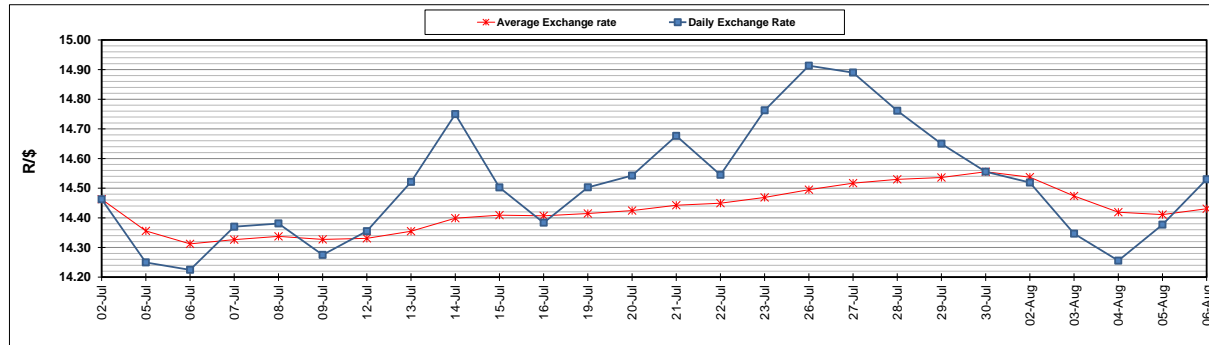
	PETROL 95 ULP	PETROL 93 ULP & LRP	DIESEL 0.05%	DIESEL 0.005%	ILL. PAR.
GAUTENG PUMP PRICE (SA c/l) AS FROM 04/08/2021	1,830.000	1,811.000	-	-	-
WHOLESALE PRICE (SA c/l) AS FROM 04/08/2021	-	-	1,564.200	1,566.600	963.488
SINGLE NATIONAL MAXIMUM RETAIL PRICE	-	-	-	-	1,217.000
BASIC FUEL PRICE - 06/08/2021 (SA c/l)	806.948	794.485	739.350	742.103	725.290
PRESS RELEASE CONTRIBUTION TO BFP 04/08/2021 - 06/08/2021 (SA c/l)	827.590	818.590	770.630	773.030	750.128
UNIT OVER/(UNDER) RECOVERY - 06/08/2021 (SA c/l)	20.642	24.105	31.280	30.927	24.838
AVERAGE BASIC FUEL PRICE 30/07/2021 - 06/08/2021	812.422	799.434	748.163	750.964	732.689
AVERAGE UNIT OVER/(UNDER) RECOVERY 30/07/2021 - 06/08/2021	(27.042)	(23.054)	(2.033)	(1.934)	(7.561)

ANALYSIS MOVEMENT OF AVERAGE OVER/(UNDER) RECOVERY

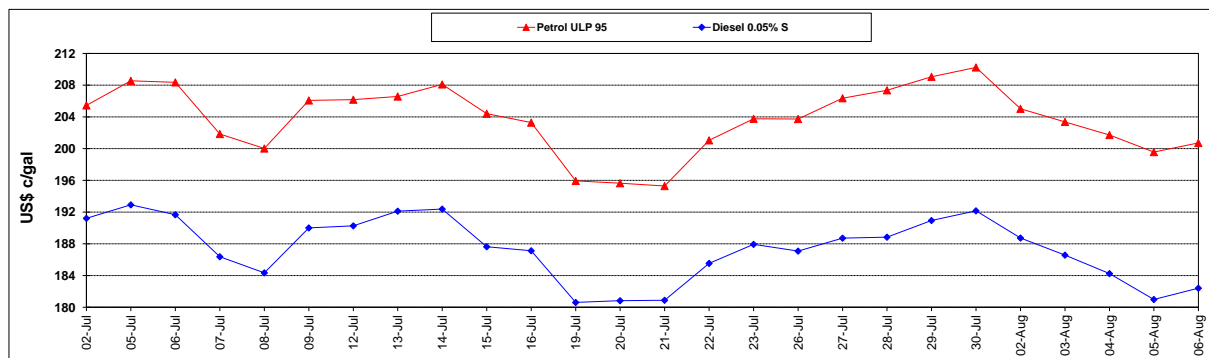
	PETROL 95	PETROL 93	DIESEL 0.05%	DIESEL 0.005%	ILL. PAR.
- MOVEMENT IN INTERNATIONAL PRODUCT PRICES	(32.970)	(28.887)	(7.492)	(7.414)	(12.907)
- MOVEMENT IN EXCHANGE RATE	5.928	5.833	5.459	5.480	5.346
AVERAGE UNIT OVER/(UNDER) RECOVERY 30/07/2021 - 06/08/2021	(27.042)	(23.054)	(2.033)	(1.934)	(7.561)

R/\$ EXCHANGE RATE - (R/\$14.5300- 06/08/2021)

EXCHANGE RATE USED IN BASIC FUEL PRICE



INTERNATIONAL PRODUCT PRICES OF BASKET USED IN BASIC FUEL PRICE



BASIC FUEL PRICE IN SA CENTS PER LITRE

